



WIDEBAND SAWMILLS AND WOOD PROCESSING EQUIPMENT

**Wood-Mizer®**

**WB 2000**   
WIDEBAND SAWMILL

EUROPE • [www.woodmizer.eu](http://www.woodmizer.eu)

| AFRICA • [www.woodmizerafrica.com](http://www.woodmizerafrica.com)

| ASIA • [www.woodmizerasia.com](http://www.woodmizerasia.com)

**Titan** Wood-Mizer®

Wood-Mizer's knowledge of customer needs in international markets has delivered a sawmill that is the best that both narrow and wideband technologies have to offer.

Wood-Mizer's WB2000 features heavy-duty construction, low maintenance requirements, and efficient operation. The WB2000 uses wideband 75 mm blades or 100 mm stellite-tipped blades. When using 75 mm blades (available with 22.22 mm and 28.50 mm tooth spacing) the sawmill is especially cost-efficient in terms of blade maintenance costs.

To ensure the best visibility of the cutting and log handling processes we offer an optional live-feed video system with two cameras as standard, expandable up to four cameras. \*

The PRO version of the sawmill uses an automatic PLC networks system.

The 12-inch touch-screen displays various parameters such as the dimensions of the material, current head height, feed position and main engine power. To adjust these parameters, the operator simply has to use the touch screen to enter new settings.



### **Operator Station** (PRO version)

The raised platform with an operator's chair and two joystick controls is equipped with a modern touch-screen control panel, shown here with the optional camera display system. \* Thanks to these features the operator can efficiently manage all sawing and hydraulic log handling functions. An air-conditioned operator's cabin is available as an option.

\* The basic 2 camera system is included as standard for all sales which are required to meet C€ certification.



## WB2000 ECONOMIC

Wood-Mizer  
**Titan**®

The EC version uses a 5.7-inch touch-screen with the latest version of the SW PLC3 Networks system. The modern, heavy-duty bed has a log capacity of up to 6 tonnes. The massive twin C-channel steel beams that make up the frame are 400 mm tall by 110 mm wide. All hydraulic log handling functions - such as the log clamps, chain turners, power rollers, side supports and hold-down clamps - are modular, and can be moved to different bunks as needed.

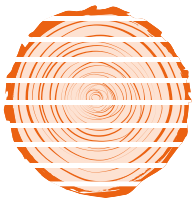
The WB2000 can be used as a standalone sawmill to fully process a log, or in addition to an existing business to process irregular logs or to produce custom orders that the existing equipment is not suited for. Thanks to the various hydraulic packages and bed lengths, the sawmill is very versatile. It can saw large diameter softwood, hardwood and tropical logs from 2.4 meters up to 12 meters.



### Operator Station (EC version)

The operator station is equipped with an integrated control panel with all head and hydraulic functions. The optional camera system \* makes it possible for the operator to observe the entire cutting process.

\*The basic 2 camera system is included as standard for all sales which are required to meet C€ certification.





## Log Handling Functions:



### Bi-directional Chain Turner

Equipped with a chain turner for quick log turning



### Central Clamp

Clamps and stabilises the log during the cutting process and is also used to turn squared cants.



### Power Roller

Used for positioning the log in the optimal place on the bed, and also for removing cants from the sawmill.



### Vertical Side Support

Keeps the log on the bed during loading and turning. Ensures the timber remains stable during the cutting process.



### Hold Down Clamps

Clamps the cant from two sides during cutting. Excellent for cants with internal stress.

## Available Hydraulic Packages:

Item	Hydraulic Packages:	Recommended Bed Type:
HS1	1 x Bi-directional Chain Turner; 1 x Central Clamp; 2 x Power Rollers; 2 x Vertical Side Supports	S
HS2	1 x Bi-directional Chain Turner; 1 x Central Clamp; 2 x Power Rollers; 2 x Vertical Side Supports; 2 x Hold Down Clamps	S
HS3	1 x Bi-directional Chain Turner; 1 x Central Clamp; 2 x Power Rollers; 4 x Vertical Side Supports	M
HS4	1 x Bi-directional Chain Turner; 1 x Central Clamp; 2 x Power Rollers; 4 x Vertical Side Supports; 2 x Hold Down Clamps	M
HS5	2 x Bi-directional Chain Turner; 1 x Central Clamp; 2 x Power Rollers; 4 x Vertical Side Supports; 2 x Hold Down Clamps	M



### Board Removal System

Includes board removal fingers, chains and shock absorbing roller.



### Belt-conveyor

Located at the rear of the bed.  
Activates automatically when the head returns, ensuring efficient material flow. Tilt angle can be adjusted.

## Performance Specifications

	WB2000 PRO		WB2000 EC	
<b>Power</b>	30 kW Electric - Standard 37 kW Electric - Optional		30 kW Electric - Standard 37 kW Electric - Optional	
<b>Cutting Capacity</b>				
Max. Width of Cut	900 mm		900 mm	
Max. Log Weight	6 tonnes		6 tonnes	
<b>Cutting Length</b>	<b>S Bed</b>	<b>M Bed</b>	<b>S Bed</b>	<b>M Bed</b>
Without Board Removal System	5.2 m	8.2 m	4.5 m	7.5 m
With Board Removal System	4.5 m	7.5 m	3.8 m	6.8 m
Min. Cutting Length	1.2 m	1.2 m	1.2 m	1.2 m
<b>Standard Equipment:</b>	PLC Industrial Networks Power Feed Block Blade Guides Blade Speed: <sup>(1)</sup> mechanical, with pulley 22 m/s (standard) <sup>(2)</sup> mechanical, with set of pulleys 26 m/s (optional) <sup>(3)</sup> adjustable, 18-30 m/s (optional) Automatic Blade Lubrication Hydraulic Blade Tension System with a pressure accumulator Platform with operator's seat and joysticks system Power Feed and Up/Down System operated by joysticks Camera monitoring System (2 pcs as Standard € € only) Board Removal System Hydraulic Equipment (more info – page 4) Hydraulic control with: - Electric with joysticks - Hydraulic speed reduction foot pedal Hydraulic pump 7.5 kW (27 l/ min)		SW PLC3 Networks Power Feed Block Blade Guides Blade Speed: <sup>(1)</sup> mechanical, with pulley 22 m/s (standard) <sup>(2)</sup> mechanical, with set of pulleys 26 m/s (optional) Automatic Blade Lubrication Hydraulic Blade Tension System with a pressure accumulator Operator Station integrated with the sawmill Power Feed and Up/Down System operated by a set of switches Camera monitoring System (2 pcs as Standard – € € only) Board Removal System Hydraulic Equipment (more info – page 4) Hydraulic control with: - Manual block-valve switches Hydraulic pump 5.5 kW (18 l/ min)	
<b>Optional Equipment:</b>	Debarker LaserSight Additional camera (max 4 pcs on one machine) Hydraulic pump 11 kW (55 l/min) Hold Down Clamp Bed Extensions: 2 m or 4 m (M Bed only) Belt-conveyor Air-conditioned operator's cab Log Loading System: Material Handling System:		Debarker LaserSight Additional camera (max 4 pcs on one machine) Hold Down Clamp Bed Extensions: 2 m or 4 m (M Bed only) Belt-conveyor Log Deck (LD2) Conveyor Belt (CB3) Transfer Table (TD2)	

## Equipment:



### Main Electric Motor

30 kW electric motor is standard.  
37 kW electric motor - optional.



### Hydraulic Blade Tension

Maintains the pressure in the blade tensioning system.



### Cameras & Screen

Ensures complete oversight of the cutting process. The standard C€ version is equipped with 2 cameras, and up to four cameras can be mounted.



### LaserSight

A laser beam indicates where the blade will cut through the log. Available as an option.



### Debarker

Removes dirt and rocks from the blade path, keeping the blades in better condition between sharpening, and extending overall blade life. Available as an option.

## Log loading System:



### Log Deck (LD2)

Logs can be staged on the Log Deck, and fed forward one at a time onto the sawmill. The loading arms ensure only one log is transferred at a time. The sawmill operator controls the Log Deck from the Operator Station. The Log Deck is available in two lengths (3.6 m or 6 m long) and two widths (1.55 m and 3.3 m).

## Material Handling System:



### Incline Conveyor (CB3)

The conveyor belt removes timber from the sawmill. After the cut is finished, the Board Removal System offloads the board from the bed onto the Conveyor Belt, which then moves the timber to the next processing stage. Like the Log Deck, the Belt Conveyor is controlled from the Operator Station.



### Transfer Table (TD2)

The Transfer Table efficiently sorts timber in different directions. Timber can be sent directly forward, or diverted to an edger. The Transfer Table can be set up for either right or left hand operation. Recommended for timber up to 6 m long.





### Air-conditioned operator's cab

Maintains comfortable temperature for the operator and protects electronic elements from extreme weather conditions.

### Bed Extensions

The bed can be extended by 2 m or 4 m (available only for M-size bed).

### Wide band blades:

#### Performance Specifications

<b>Blade Wheel Diameter</b>	800 mm
<b>Blade Wheel Type</b>	Cast iron crowned
<b>Blade Length</b>	6 m
<b>Blade Width</b>	100 mm (stellite-tipped blade) 75 mm (teeth are set) – optional (*)

(\*) Special blade wheels required for sprung set 75 mm blades.



#### Blade Maintenance Package (for maintaining 75 mm blades):



#### BMS500/600 – Professional Blade Sharpener

It will sharpen blades from 25 mm wide to 75 mm wide and tooth spacing from 12.7 mm to 28.6 mm. Uses an industrial 203 mm diameter CBN wheel to sharpen blades, and the wheel rotates at 4250 rpm. The user-friendly control station includes a tooth counter display, variable feed speed, and two modes: "Set-Up" and "Run". Is quickly configured to stop after an exact number of teeth have been sharpened. BMS600 – Same features as the BMS500, but with a larger pump and oil reservoir for increased coolant flow for high volume saw shops.



#### BMT300 – Automatic Toothsetter

This pneumatic setter ensures extremely accurate and consistent tooth setting. The computer "learns" from the first few teeth exactly how much pressure should be applied to ensure accurate setting. An electronic control panel displays all parameters and diagnostic tools. Simply install the blade, and start the setter in the mode you wish to run. When one side of the blade is finished, invert the blade, re-install it in the setter, and move the blade pusher into the reverse position. Maximum blade width is 75 mm, and the feed rate is up to 24 teeth per minute.



#### CBN Wheels 203 mm (8")

Wood-Mizer supplies specially designed borazon grinding wheels in five profiles which exactly match our factory set profiles. 203 mm borazon grinding wheels are available for all Wood-Mizer blade profiles. The 203 mm wheel is made for use with the BMS500/600 industrial blade sharpener. The larger grinding surface provides longer sharpening life of the grinding wheel, and a faster grind, resulting in top quality sharpening.



**Wood-Mizer Industries Sp. z o.o.**

European Headquarters and Manufacturing Facility

Nagórna 114, 62-600 Koło, Poland

tel.: +48 63 26 26 000 fax: +48 63 27 22 327

**[www.woodmizer-europe.com](http://www.woodmizer-europe.com)**