



Wood-Mizer®

Titan

Industrial Sawmills and Wood Processing Equipment



TITAN Twin Vertical Saws & Resaws

The TITAN range offers simple, robust, high performance bandsaw systems. The range is currently available in three size configurations: the smaller TITAN Hybrid, the larger TITAN 4, and then the TITAN 6.

TH-TBLT TITAN Hybrid Twinband (TITAN hybrid TVS)



The TITAN Hybrid TVS is our efficient and basic twin vertical saw for small to medium diameter logs up to 4m in length. It is designed to break the log into a two-sided cant.

It is available with or without log turning functionality. The automated log loader allows for each log to be rotated to an optimal position and then placed onto the moving spiky feed chain.

The log is guided by pressure feed rollers, giving it maximum stability in the cut. The operator may select the desired cutting size and the machine will automatically adjust to that size, removing the need to sort logs before sawing. Investing in log sorting capability increases log throughput.

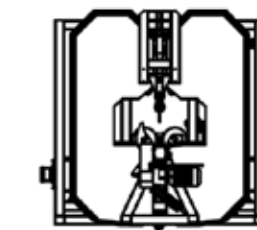
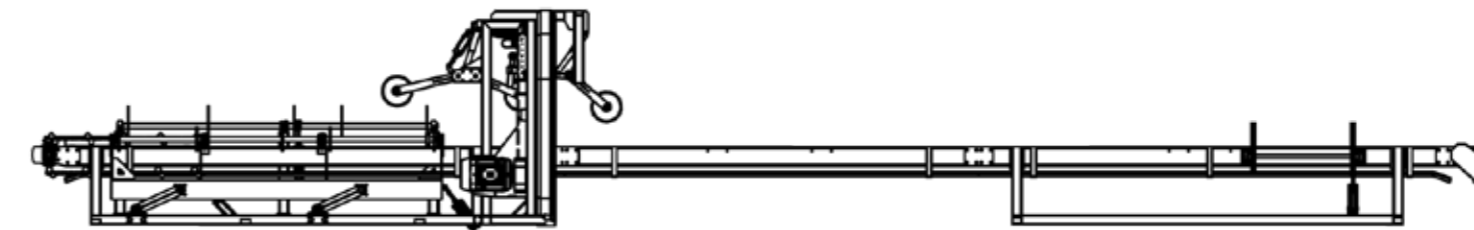
The TITAN Hybrid TVS is ideal for pallet mill and stud mill operations, where the product has relatively small cross-sectional dimensions.

KEY FEATURES:

- Feed speeds up to 40 m/min
- Compatible for blades sizes 32 mm – 80 mm
- Log diameters from 120 mm – 400 mm
- Heavy duty construction for high strain sawing
- Automated log loading system onto the spiky chain
- Electronic cut size control

Performance specifications

Model	TH-TB	TH-TBLT
Log diameter	Min - 120mm; Max - 400mm	Min - 120mm; Max - 400mm
Max log length	3m	4.2m
Blade width	Min - 32mm; Max - 80mm	Min - 32mm; Max - 80mm
Blade kerf	2.5mm	2.5mm
Main saw motor	15kW or 22kW (20.1HP or 29.5HP)	22kW (29.5HP)
Feed motor	2.2kW (3HP)	3kW (4HP)
Feed speed	0 - 40m/min (motor & blading dependant) Electronic variable feed speed control	0 - 40m/min (motor & blading dependant) Electronic variable feed speed control
Feed type	Sharp chain	Sharp chain
Band wheel diameter & width	780mm (diameter); 30mm to 78mm (customer specific width)	780mm (diameter); 30mm to 78mm (customer specific width)
Sizing method	High precision electric leadscrew	High precision electric leadscrew
Saw tensioning	Hydraulic with spring	Hydraulic with spring
Hold downs	With shock absorbtion	With shock absorbtion
Optional extras	Outfeed roller tables, Outfeed hold down, Feed extensions	Log charger unit, PLC sizing control, Outfeed hold down, Feed extensions, Pneumatic cant kicker, Sawdust extraction hoods



T4 & T6-TBLT TITAN 4 & TITAN 6 Twinbands (TITAN 4 & 6 TVS)



The TITAN 4 and TITAN 6 are our larger and most robust primary break-down twin-vertical saws. Both models make use of the same heavy duty, automated infeed and outfeed systems, but differ in blade size and production capacity.

These models can handle a high throughput of small to medium diameter logs and a maximum log length of 6.6m

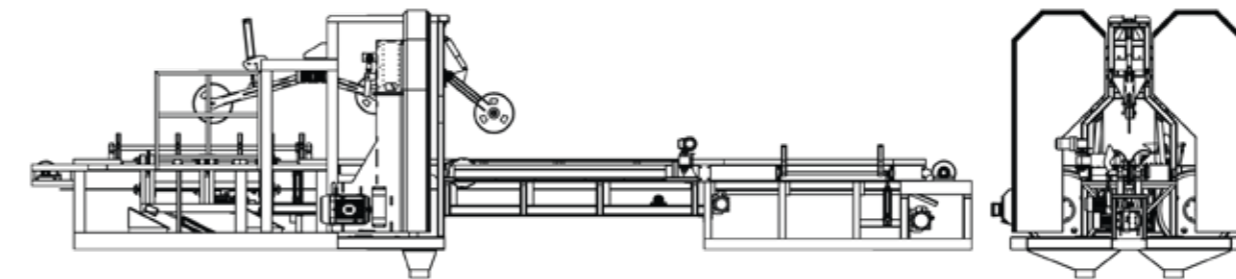
The main priority at this primary stage in the log breakdown process is to achieve equal open faces on the sawn cant. This allows for higher recovery down the line at the multiple rip or gang saw. Our TITAN Twinbands achieve equal open face cutting using a fast and accurate log loading system coupled with pressurised hold-down rollers and a spiky-feed chain.

KEY FEATURES:

- Feed speeds up to 40/60 m/min (TITAN 4/6)
- Compatible for blade sizes: 100 or 125 mm/150 mm (TITAN 4/6)
- Log diameters from 120 mm – 450 mm
- Automated log loading system onto the spiky chain
- Easy to use electric servo sizing control
- Robust design for harsh operating environments and high production rates
- 3 available length options to suit your requirements

Performance specifications

Model	T4-TBLT	T6-TBLT
Head configuration	Twin or Quad	Twin or Quad
Log diameter	Min - 120mm; Max - 450mm	Min - 120mm; Max - 450mm
Max log length	3.3m or 4.5m or 6.6m (Feed length dependant)	3.3m or 4.5m or 6.6m (Feed length dependant)
Min log length	1.8m or 1.8m or 2.4m respectively	1.8m or 1.8m or 2.4m respectively
Blade width	100mm or 125mm (4 inches or 5 inches)	150mm (6 inches)
Blade kerf	2.5mm	2.5mm
Main saw motor	22kW or 30kW (29.5HP or 40.2HP)	45kW or 55kW (60.3HP or 73.8HP)
Feed motor	4kW (3HP)	5.5kW (7.3HP)
Feed speed	0 - 40m/min (motor & blading dependant); Electronic variable feed speed control	0 - 60m/min (motor & blading dependant); Electronic variable feed speed control
Feed type	Sharp chain	Sharp chain
Band wheel diameter & width	950mm (diameter); 100m (width)	1200mm (diameter); 150mm (width)
Sizing method	Ball screw	Ball screw
Saw tensioning	Hydraulic with spring	Hydraulic with spring
Hold downs	With shock absorbtion	With shock absorbtion
Optional extras	Overhead carriage for multiple pass functionality, Additional outfeed hold downs, 63mm Narrow chain	Overhead carriage for multiple pass functionality, Additional outfeed hold downs, 63mm Narrow chain



TH-R TITAN Hybrid Resaw

The TITAN Hybrid Resaw packs a punch when it comes to performance for such a small package. When fitted with 3-inch stellite-tipped blades, this machine is more than capable of feed speeds in excess of 40m/min without wavering in the cut.

Its high performance is the result of many years of design refinement. It utilises the high strain TITAN column design offering accurate, highspeed cutting at an affordable price.

Being a TITAN Hybrid, this machine is highly versatile. It can be fitted with narrowband blades or 3-inch performance blades. It can be used to process sideboards and square cants alike. With its solid frame, this machine can be moved quickly and integrated into existing operations with ease.

Its flexibility, low power consumption, high performance and high quality make it our most popular resaw on the market.

* Available in single or twin head configurations

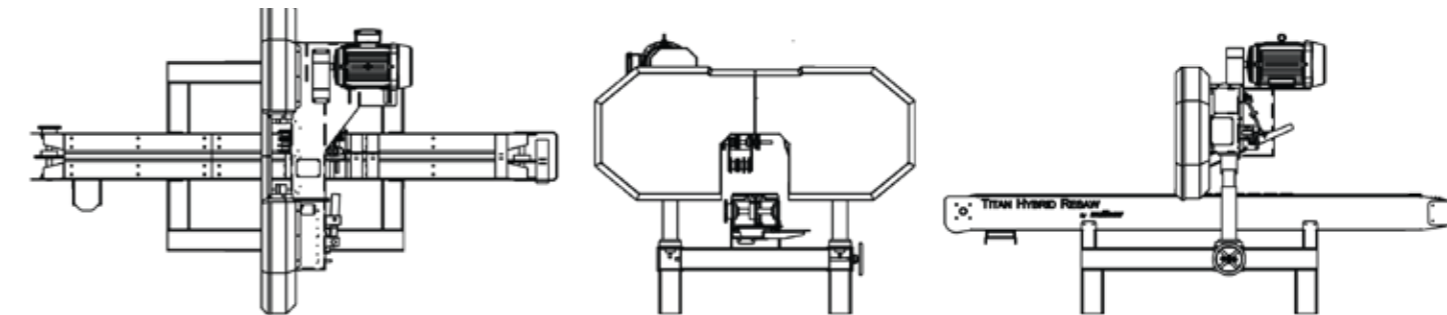
KEY FEATURES:

- Feed speeds up to 40 m/min
- Compatible for blade sizes: 32 - 80 mm
- Throat width 350 mm
- Single or twin-head configurations
- Heavy duty TITAN headrig column for high strain, high speed sawmilling
- Pneumatically assisted, powered hold-down
- Heavy duty slatt-chain feed with variable speed
- Stationary arbour drive wheel system



Performance specifications

Model	TH-R
Throat width	350mm
Max material height	290mm
Min material height	15mm
Blade width	Min - 32mm; Max - 80mm
Blade kerf	1.5 - 2.5mm
Main saw motor	22kW (29.5HP)
Feed motor	1.1kW (1.5HP)
Feed speed	0 - 40m/min (motor and blading dependant); Electronic variable feed speed control
Feed type	Heavy duty slatt-chain with driven pneumatic hold down
Band wheel diameter	780mm
Band wheel width	30mm to 78mm (customer specific)
Saw tensioning	Hydraulic with spring
Configuration Options	Twin head



T4 & T6-TR TITAN 4 & TITAN 6 Twin Resaws

The TITAN 4 and TITAN 6 Twin Resaws offer ultra-fast size changes during the resawing process. As little as 0.3 seconds is needed to change the size for each and every sideboard (depending on thickness), even when feeding at over 20 pieces per minute (depending on board length). As a result optimal recovery is achieved, unlocking extra product that previously would have gone to waste.

Importantly, no sorting of material is needed prior to this machine. Both the TITAN 4 and TITAN 6 models make use of the same heavy duty feed systems. With its larger 6-inch blades, the TITAN 6 model is capable of faster feed speeds, thereby offering higher production capacity. By using a Twin Head configuration, it is possible to make two cuts into each sideboard with only one pass.

The TITAN 4 and TITAN 6 Twin Resaws are ideal for medium to high production sawmills.

* available in single or twin head configurations

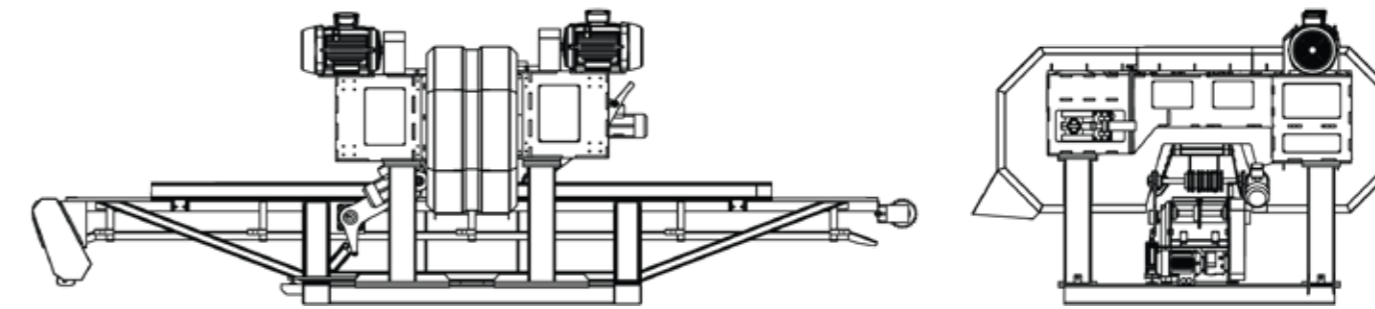
KEY FEATURES:

- Feed speeds up to 60/80 m/min (TITAN 4/6)
- Compatible for blade sizes: 100 or 125 mm/150 mm (TITAN 4/6)
- Throat width 430/450 mm (TITAN 4/6)
- Single or twin-head configurations
- Electric servo sizing system for fast size changes – under 0.3 seconds! (depending on thickness)
- Heavy duty slatt-chain feed with variable speed
- Powered hold-down rollers on both the in- and out-feeds for fast, accurate material feed
- Robust TITAN headrig column for high strain, high speed sawmilling

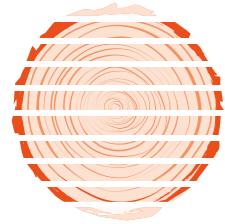


Performance specifications

Model	T4-R/TR	T6-R/TR
Head configuration	Single head or Twin head	Single head or Twin head
Throat width	430mm	450mm
Material height	Min - 15mm; Max - 320mm	Min - 15mm; Max - 330mm
Blade width	100mm or 125mm (4 inches or 5 inches)	150mm (6 inches)
Blade kerf	2.5mm	2.5mm
Main saw motor	22kW or 30kW (29.5HP or 40.2HP)	45kW or 55kW (60.3HP or 73.8HP)
Feed motor	1.5kW (2HP)	2.2kW (3HP)
Feed speed	0 - 60m/min (motor and blading dependant) Electronic variable feed speed control	0 - 80m/min (motor and blading dependant) Electronic variable feed speed control
Feed type	Heavy duty slatt-chain	Heavy duty slatt-chain
Band wheel diameter	950mm	1200mm
Band wheel width	100mm	150mm
Sizing method	Electric servo sizing system	Electric servo sizing system
Saw tensioning	Hydraulic with spring	Hydraulic with spring
Hold downs	Driven with pneumatic pressure	Driven with pneumatic pressure
Optional extras	Board scanning and intelligent sizing, Pneumatic assisted hold down	Board scanning and intelligent sizing, Pneumatic assisted hold down



T4 & T6-HLB TITAN 4 & TITAN 6 Horizontal Log Breakdown



The TITAN 4 and TITAN 6 Horizontal Log Breakdown sawmills are simple, heavy duty saws designed to break down large diameter logs into boards. Wide bandsaw blades allow for accurate and fast cutting.

A through-and-through cutting pattern is used. This results in a fully processed log, without the need to handle the material during the cutting process.

Both models are equipped with two loading bays allowing one bay to be loaded while the other is being used for sawing. The TITAN 6 model runs wider 6-inch blades, allowing it to process larger log diameters than the TITAN 4 model.

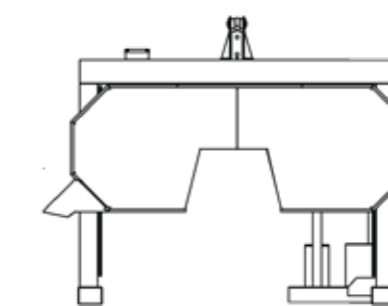
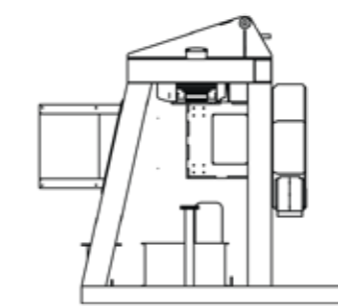
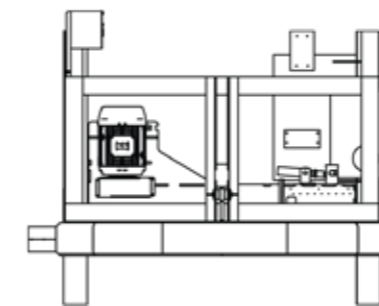
The TITAN 4 and TITAN 6 Horizontal Log Breakdown machines are ideal primary breakdown machines for remote locations. They are designed to give long service life under harsh conditions, while keeping maintenance simple and intuitive.

KEY FEATURES:

- Compatible for blade sizes: 100 or 125 mm/150 mm (TITAN 4/6)
- Log diameters from 600/800 mm (TITAN 4/6)
- Hydraulic sizing with digital readout
- Breaks down up to 800mm diameter logs of any length
- Two loading bays allow for continuous, uninterrupted cutting
- Ideal for remote locations

Performance specifications

Model	T4-HLB	T6-HLB
Max log diameter	600mm	800mm
Max log length	fully customizable	fully customizable
Blade width	100mm or 125mm (4 inches or 5 inches)	150mm (6 inches)
Blade kerf	2.5mm	2.5mm
Main saw motor	22kW or 30kW (29.5HP or 40.2HP)	45kW or 55kW (60.3HP or 73.8HP)
Feed motor	Hydraulic variable speed	Hydraulic variable speed
Feed speed	0 - 40m/min (motor and blading dependant)	0 - 60m/min (motor and blading dependant)
Feed type	Hydraulic driven traversing head	Hydraulic driven traversing head
Band wheel diameter	950mm	1200mm
Band wheel width	100mm	150mm
Sizing method	Hydraulic with digital readout	Hydraulic with digital readout
Saw tensioning	Hydraulic with spring	Hydraulic with spring
Optional extras	Titlting log bed with laser guided automated log turning	Titlting log bed with laser guided automated log turning





TITAN Circular Edgers & Multirips

The TITAN range of circular edgers and multirips consists of heavy duty multirips (gang edgers) and board edgers. The TITAN range of machinery utilises heavy duty, thick steel frames to reduce vibration and improve service life under even the toughest working conditions.

Throughout the TITAN range, care has been taken to allow quick access to wear components for easy machine maintenance.

We take a no-nonsense approach when we design and manufacture these machines, resulting in tough, long lasting machinery.

T-MR160 & T-MR240 TITAN Multirips

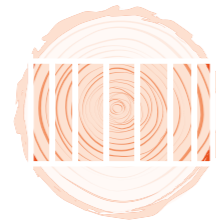
Our mulirips are ideal workhorse machines, producing the majority of finished product in most of our sawmills. The simplicity of our design, coupled with solid construction and plenty of power, produce high throughput and top quality results.

Multirips are capable of making multiple high tolerance cuts in a single pass. Proper alignment of the cant going into the Multirip produces excellent throughput and recovery.

Optical sensors detect the presence of material, activating pneumatically assisted driven hold-downs to apply pressure down onto the cant, and guiding the timber accurately through the cut.

The high accuracy on board thickness along with the excellent cutting finish achieved by these circular saws result in improved recovery savings further down the line in the dry-milling/ finishing process.

This beast of a machine is a must-have in any high volume sawmilling operation.

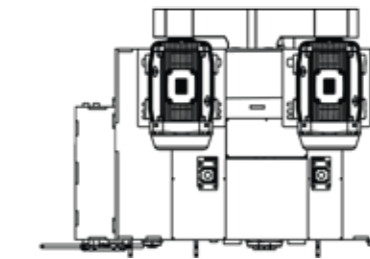
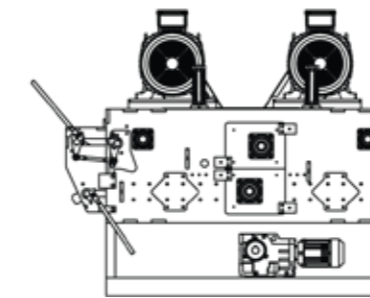
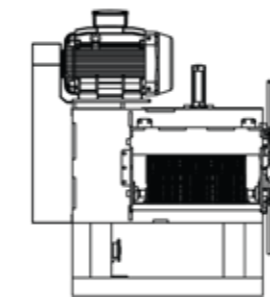


KEY FEATURES:

- Heavy duty steel frame construction
- Optical sensor controlled pneumatic hold-downs
- Many optional add-ons
- Single or double arbour configuration
- Secondary anti-kickback unit

Performance specifications

Model	T-MR160	T-MR240
Throat width	580mm (max material width)	580mm (max material width)
Min material thickness	80mm	80mm
Max material thickness	160mm	240mm
Blade diameter	320mm	400mm
Blade kerf	3 - 5mm	3 - 5mm
Main saw motors	2 x 45kW motors (60.3HP)	75kW + 90kW (100HP & 120HP)
Feed motor & gearbox	3kW	3kW
Feed speed	0 - 40m/min Electronic variable feed speed control	0 - 40m/min Electronic variable feed speed control
Hold downs	Optical sensor activated pneumatics and driven hold downs	Optical sensor activated pneumatics and driven hold downs
Optional extras	Arbor sleeves for convenient loading of saws 680mm wide throat for extra wide cutting Motor power upgrade Driven roller tables on infeed and outfeed	Arbor sleeves for convenient loading of saws 680mm wide throat for extra wide cutting Motor power upgrade Driven roller tables on infeed and outfeed



T-ELE640 TITAN Manual Board Edgers

The TITAN Manual Board Edger is designed to offer a twofold solution to small and medium-sized sawmills. This robust machine edges material up to 40mm thick at high speeds, making it the ideal companion to the TITAN Resaws. It can also be run at slower feed speeds to rip material up to 107mm thick, making it an affordable alternative to a Gangsaw. Consequently, this TITAN product is a truly versatile machine.

This machine's primary function is to edge boards received from a resaw or a QVS (quad vertical saw). The wide arbour can be packed with multiple blades. By aligning the incoming board accordingly, it is possible to achieve a multitude of product sizes, simply and affordably.

Whichever its intended use, this versatile machine is incredibly robust and easy to maintain. An affordable, hardworking solution for any mill!

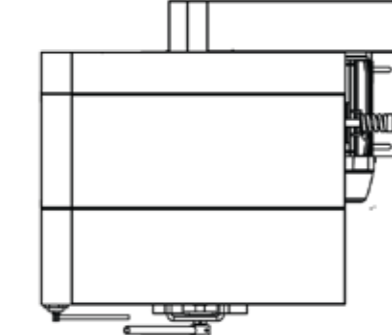
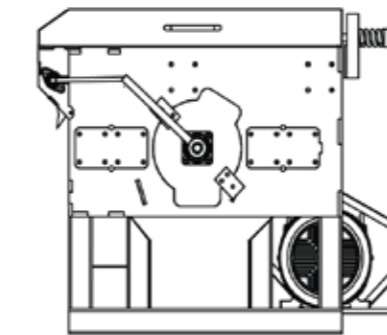
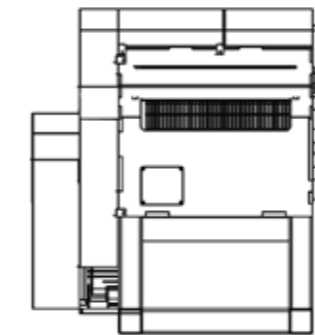


KEY FEATURES:

- Quick and easy maintenance due to bolt in sub-assemblies
- Variable feed speed, up to 130 m/min
- Can rip boards up to 107mm thick
- Can be used as gang edger
- Heavy duty modular rollers

Performance specifications

Model	T-ELE640
Throat width:	640mm (max material width)
Min material thickness	12mm
Max material thickness	107mm
Blade diameter	375mm
Blade kerf	3 - 5mm (Material dependant)
Main saw motors	30kW (40.2HP)
Feed motor & gearbox	3kW (4HP)
Feed speed	0 - 130m/min Electronic variable feed speed control
Hold downs	Driven, large diameter and high traction
Optional extras	Laser lines for board alignment In and outfeed roller tables



T-AE TITAN Automated Edgers

The TITAN Automated Edger uses optical scanning technology to achieve high precision and low waste edging of boards.

The entire edging process is automated. First, each board is scanned. The profile of each board is then analysed by a computer, which decides on the best product to maximize recovery. Decisions are based on both volume recovery and product value.

After scanning, the boards pass through an alignment station and then are sawn.

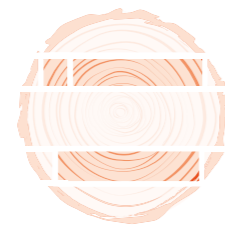
The V-AE is capable of handling up to 25 boards per minute and is the ideal machine to edge boards coming from the TITAN Resaw. Electric servo sizing system achieves any width of cut without complication.

Parallel PLC / computer control systems allow the machine to be switched over to manual mode with a single button. Online support allows our technicians to dial into your machine to troubleshoot it remotely.

Overall, the TITAN Automated Edger is a simple, robust and automated solution to your edging needs.

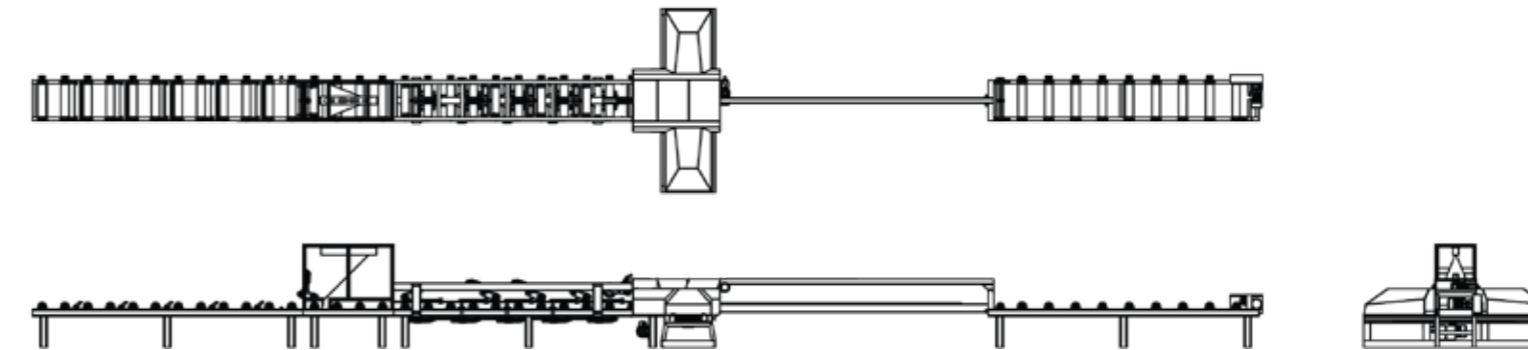
KEY FEATURES:

- Optical scanning on the run
- Easy to use windows interface
- Mechanised material handling for fast, accurate board alignment
- Online support and troubleshooting available



Performance specifications

Model	T-AE
Throat width	500mm (max material width)
Cutting width	Min - 40mm; Max - 300mm (customizable up to 500mm)
Material thickness	Min - 19mm; Max - 45mm
Blade diameter	300mm - 320mm
Blade kerf	3 - 5mm
Main saw motors	22kW or 30kW (29.5HP or 40.2HP)
Feed motor & gearbox	10kW (13.4HP)
Feed speed	0 - 140m/min
Piece Count	0 - 25 boards/min (length dependant)
Sizing method	Electric servo sizing system Optical scanner controlled Automated board alignment
Scanning method	Computer controlled optical scanner
Hold downs	Driven pneumatic hold downs
Options	In-line or transverse board scanning



Wood-Mizer wideband sawmilling solutions

About Wood-Mizer

Wood-Mizer revolutionised the sawmilling industry forever in 1982 when the first portable band sawmill was introduced to the market in the USA. Little did anyone realise at the time the market potential for small-scale sawmilling.

As global demand grew, so did Wood-Mizer's product range. In the early 2000s, Wood-Mizer launched an industrial line of narrow band sawmilling equipment that included breakdown headrigs, multihead resaws, edgers and a SLP Smart Log Processing line.

The birth of Wood-Mizer wideband

In 2014, Wood-Mizer released their first wide band sawmill – the WB2000, and in 2016 Wood-Mizer entered negotiations with the South African sawmill equipment manufacturing company "Multisaw" to add their proven wide band range to Wood-Mizer's industrial offerings. Multisaw's reputation is based on years of supplying tough, robust and easy to maintain sawing equipment into one of the most demanding market areas in the world.

Advantage

Wood-Mizer's wide band range is designed to improve timber production rates, increase recovery, reduce power consumption and elevate overall sawmill efficiency. These key points help our customers achieve better profitability and improve their competitive edge.

Our mill designs are interactive and customised according to our client specifications. Machine layouts are adaptable and easily integrated into existing sawmill lines.

Global Support

With Wood-Mizer, our customers have access to an unparalleled global network for customer service and support. With branch locations on five continents, and trained distributors in more than 100 locations around the world, we firmly believe in supporting our customer as locally as possible.

Proven results

Wood-Mizer's presence in the sawmilling market started in 1985. In the 32 years since then our products have been developed and proven in customer locations throughout the world in some of the harshest and most demanding sawing environments.



Wood-Mizer US Headquarter's new production hall in Indiana.



Wood-Mizer Europe's Headquarters and production hall in Poland.

Titan

Wood-Mizer Industries Sp. z o.o.

European Headquarters and Manufacturing Facility

Nagórna 114, 62-600 Koło, Poland

tel.: +48 63 26 26 000 fax: +48 63 27 22 327

www.woodmizer.eu